



WPLC

Wisconsin Public Library Consortium

Annual Membership Meeting 2021

April 29, 2021

10:00 am



WELCOME!

Kristen Anderson, WPLC Board Chair



Today's Agenda

- 2020 Year in Review
- Current Initiatives Update
- 2021 Recommendations

2020

Year in Review

Data, pandemic usage, new committees and more!



6,999,763 checkouts!

Almost 7 million!

235,398 unique users

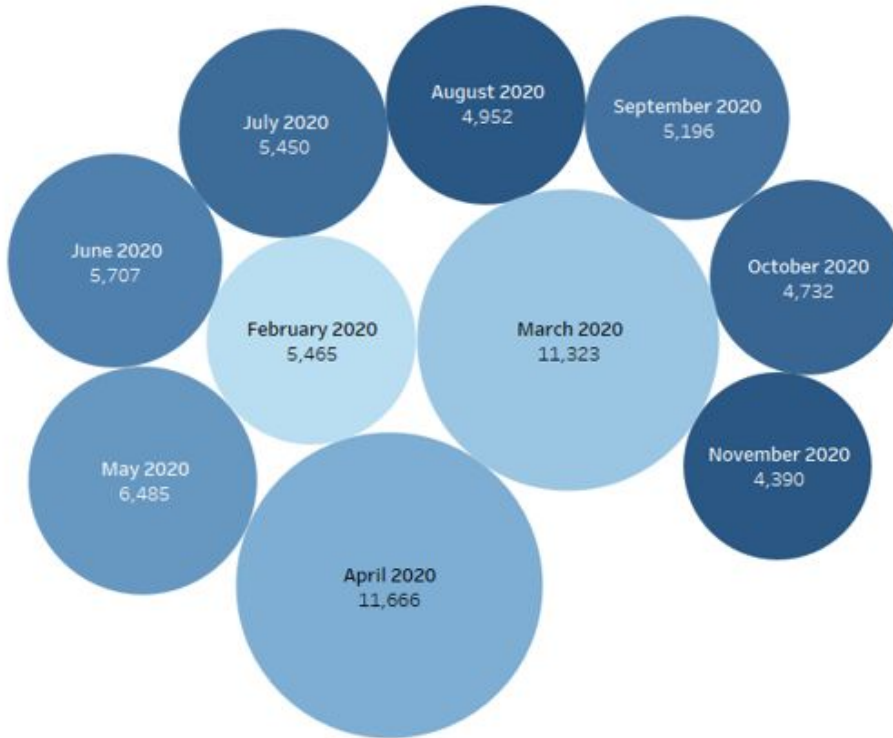
And a lot of users

3,518,189

Holds!



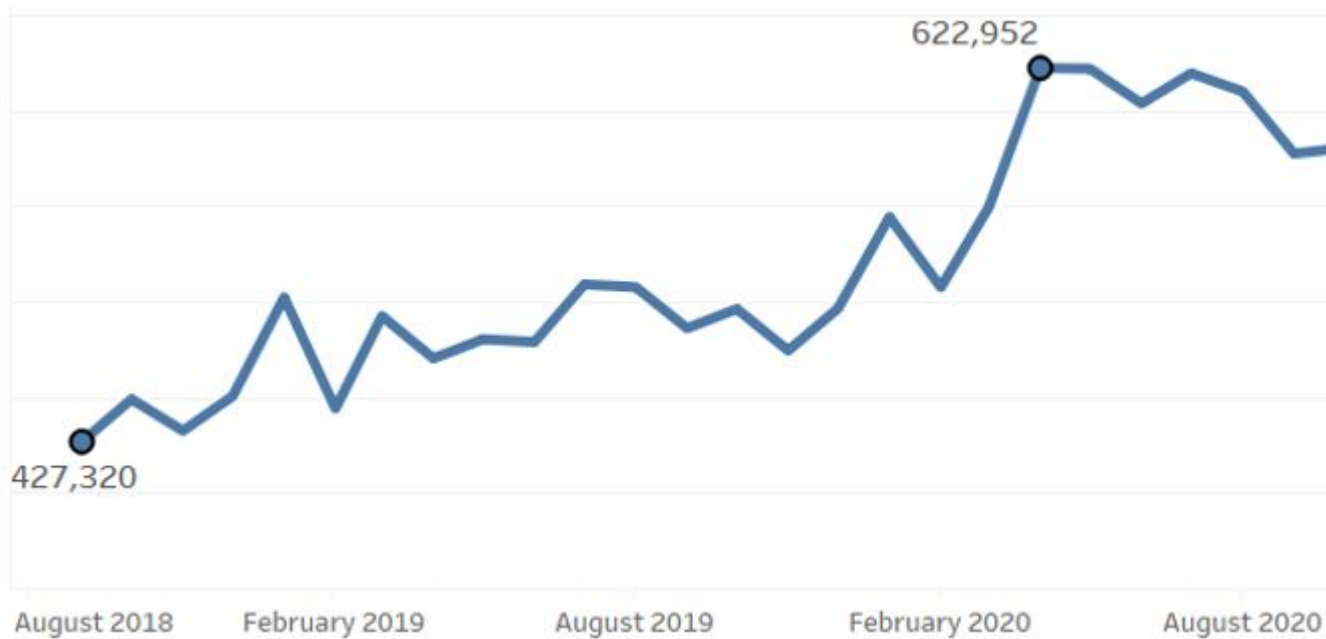
Pandemic Usage



New User growth increased by 113% between February and April 2020



Pandemic Usage



Checkouts increases coincided with “Safer at Home” order in March 2020.



Pandemic Usage



Strategic financial investment helped bring down holds for patrons during increased collection usage



Digital Library Collection

- \$250,000 pandemic funding from DPI/LSTA
- Funding went to Sim Use Titles, CPC and Holds
- Reduced wait times by almost 20%, from 41.37 days to 33.1 days.



New Committees!

- Technology Collaboration Steering Committee
- Technology Collaboration Operations Committee



Tech Committees Process

Operations
Committee

Idea generation /
Information gathering /
Project vetting

Steering
Committee

Governance /
Budget development

Board

Final project approval

Update

Current Initiatives

Advocacy, assessment,
support, and more!



2020 Initiatives Update

- Assess impact of budget increase
- Form an Advocacy Workgroup
- Collection Development Changes
- Advantage and Consortium Selector Support



Board Advocacy Workgroup

- Reaching out to statewide partners interested in equitable access to e-content and technology infrastructure
- Raising awareness of WPLC' successes & expanding collaborations
- Developing one-page advocacy piece to support conversations



Collection Development

- Increase always available content
- Research value of when to purchase - upfront or by number of holds
- Document publishers and available purchasing models
- Work with other consortia to share data to better understand publisher landscape
- Collection Development of series and gaps within series



Collection Comparison

	WPLC	Library A	Library B
Population Served	5,816,231	7,140,885	4,918,871
Ordering Frequency	100+ per month	70-90+ per month	90-100 per month
Cost per Circ Use	Not Active	Active	Active
Lucky Day Collection	Yes	No	No
Current Average Waiting Time	32.76 days	33.25 days	34.65 days
Total 2020 Checkouts	6,999,763	5,238,036	6,708,425



Selector Support

- Survey of Advantage selectors to inform resources
- Resource page on website - coming soon
- Dashboard of Advantage data snapshots - see a preview at WAPL

2021

Recommendations

Collection Development
Committee



Current Recommendations

- Enhance Juvenile/YA collection development
- Improve collections' accessibility and diversity
- Increase buying pool amount for 2022

Current Recommendations

**The Digital Library
Steering Committee's
thoughts...**





Questions?

Or comments?



Don't Miss Out....

Upcoming WAPL Sessions

WPLC & WSDLC Pandemic Usage

Wednesday, May 5th at 10:45 am

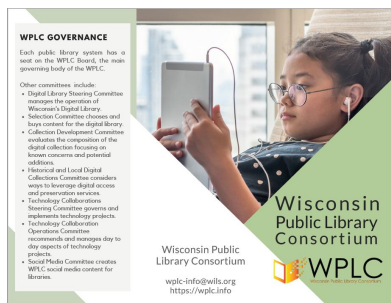
Committees and initiatives and data, oh my! A walkthrough of the WPLC.

Friday, May 7th at 9:30 am

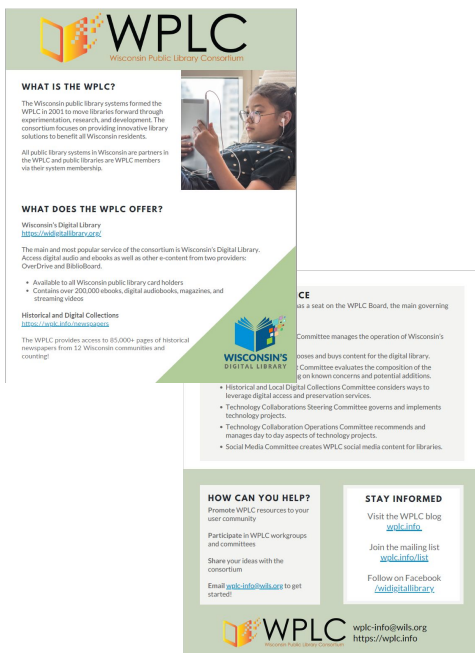


Don't Miss Out....

Print Version - Trifold



Digital Version



WPLC Brochure

Produced by the WPLC Board.

Helps libraries understand what WPLC is, what they do, and how libraries can participate.

<https://wplc.info/resources>

Thanks for joining us!

wplc-info@wils.org